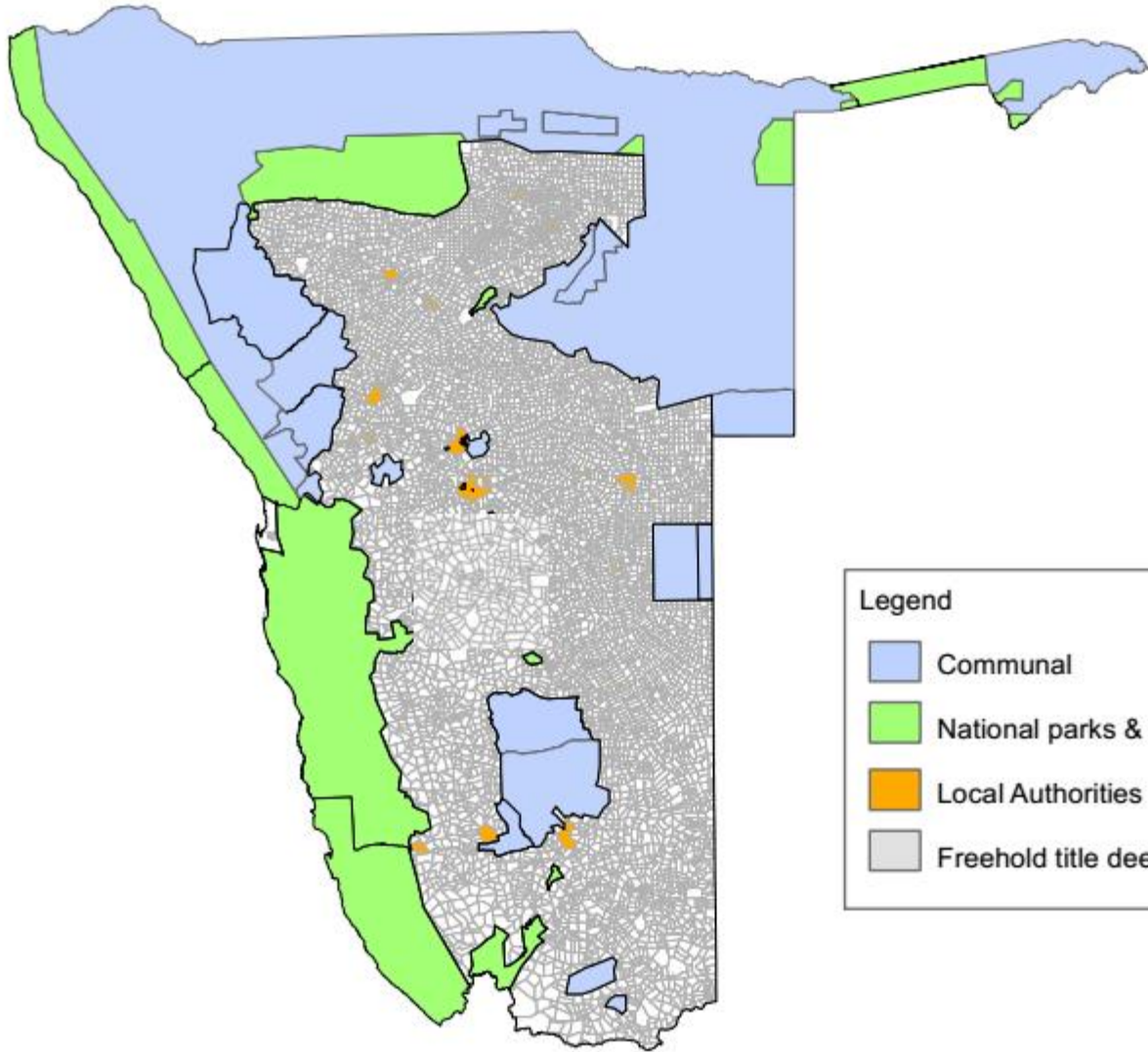
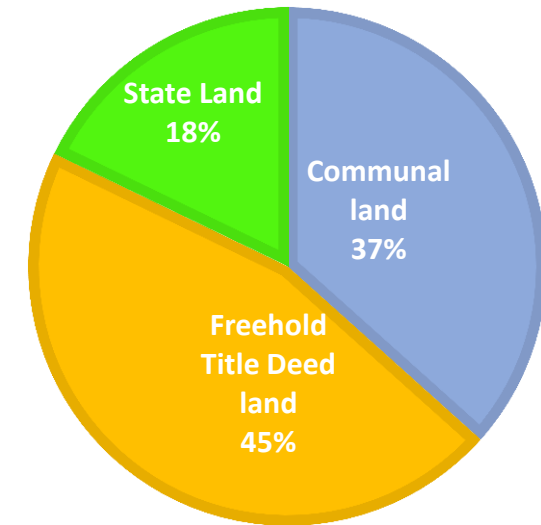


# General Land Classification

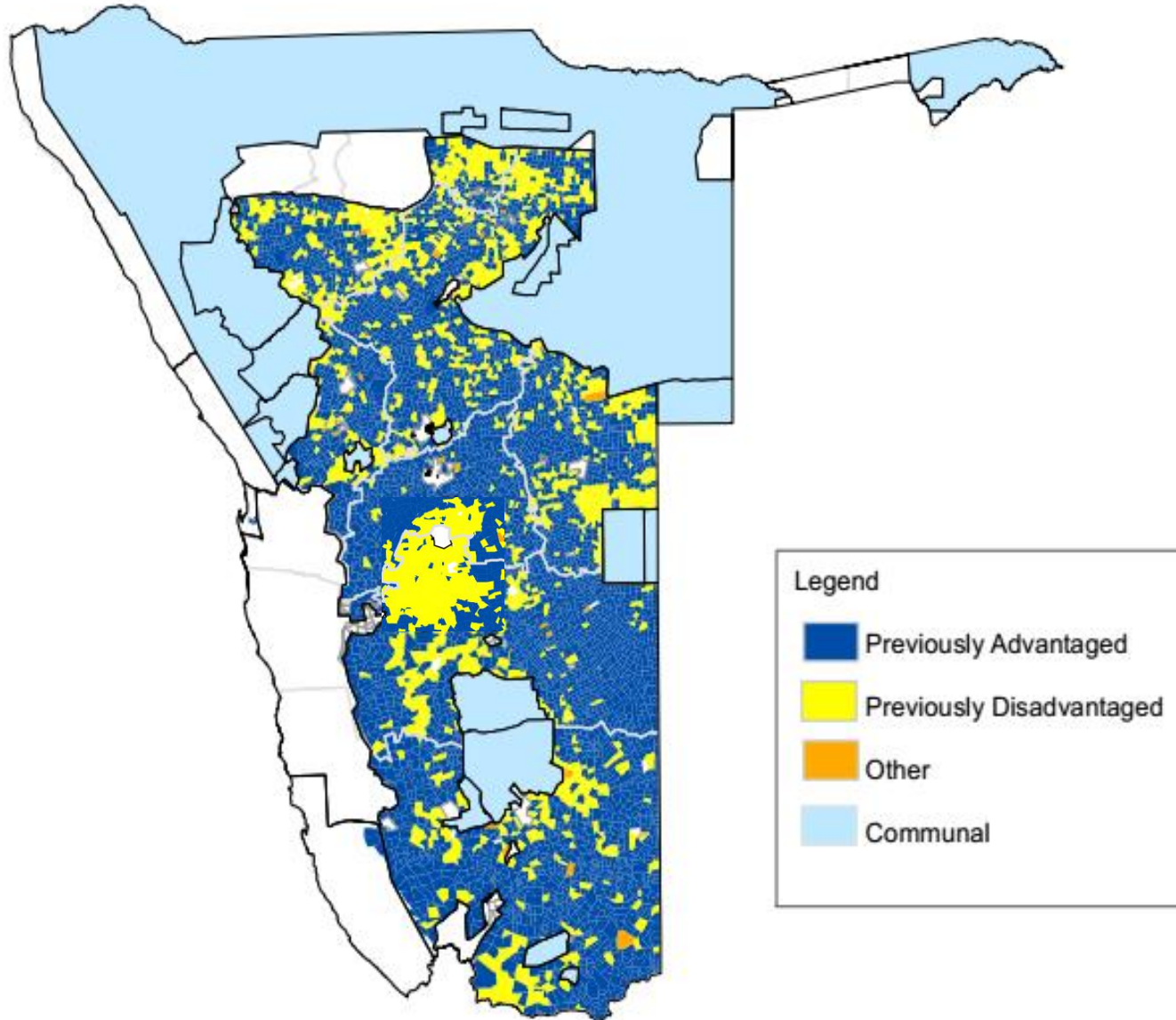


Total Land Mass = 82,355,244 hectares

Communal Land	30,365,794	37%
Parks & Restricted Areas	13,590,629	18%
Local Authorities	855,756	
Freehold Title Deed	37,535,066	46%



# Total Agricultural Land

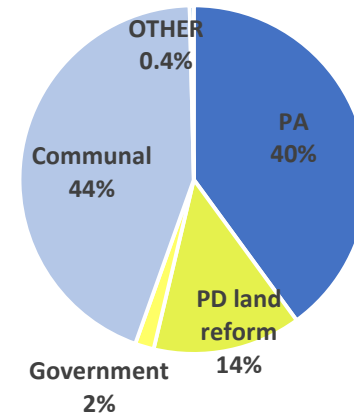


Total Agricultural Land = 68,764,615 hectares  
(Incl. Local Authorities, mines, private tourism)

Freehold	38,398,821	56%
Communal	30,365,794	44%

Land tenure within total agricultural land

PA (incl. Mines and private tourism)	27,475,227	40%
PD (Land reform)	9,458,507	14%
GOV & Public institutions	1,200,379	2%
PD Communal	30,365,794	44%
Other (Church, SOEs etc.)	264,709	0.4%



Previously Advantaged owns 40% of total agricultural land in Namibia